

AFTER ETOPS

IN-FLIGHT

ETOPS SEGMENT

BEFORE ETOPS

PREFLIGHT PLANNING

WX

PROC

FUEL

WX may drop below OEI minimum
In case of diversion use applicable minima

Applicable OEI minimum
- disregard overmass
- apply X-wind limits including gusts

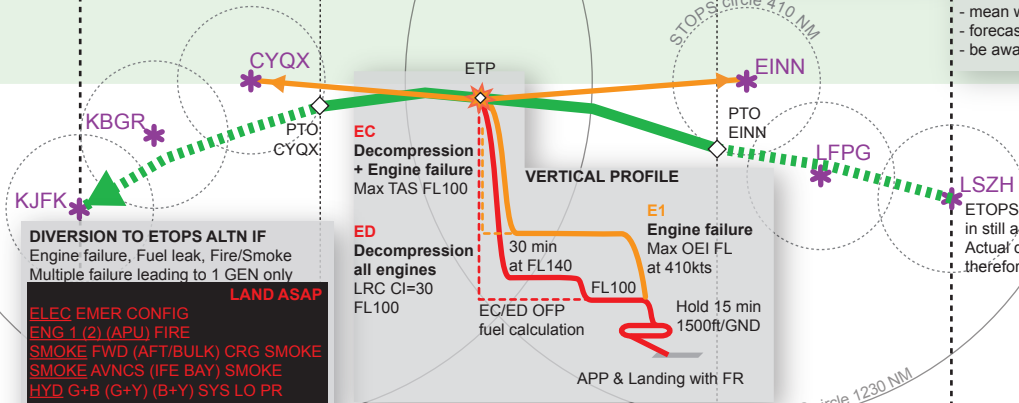
If conditions required are no longer available, a re-planning must be done

Approach facility
Precision App
NPA or Circling

Planning minima
OEI min + 200ft/800m(0.5SM)
Min + 400ft/1500m (1SM)

Remarks
- Ceiling and visibility must be within limits
- Overmass may be disregarded
- Planning based on RNAV(GPS) is **not** allowed
- For circling, the lowest of the minima is applicable
- USA: min must not be below USA altm min

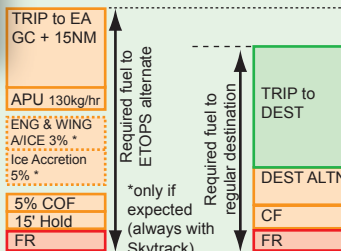
WIND
- mean wind acc OM B (X-wind: 40kts T-wind: 10kts)
- forecast x-wind including gusts must be considered
- be aware of magnetic variation



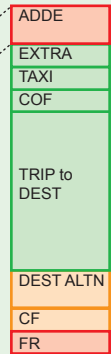
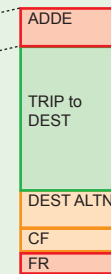
DIVERSION TO ETOPS ALTN IF
Engine failure, Fuel leak, Fire/Smoke
Multiple failure leading to 1 GEN only

- LAND ASAP**
- ELEC EMER CONFIG
 - ENG 1 (2) (APU) FIRE
 - SMOKE FWD (AFT/BULK) CRG SMOKE
 - SMOKE AVNCS (IFE BAY) SMOKE
 - HYD G+B (G+Y) (B+Y) SYS LO PR
 - ENG ALL ENG FLAME OUT
 - any HYD failure with G SYS on RAT

CRITICAL FUEL SCENARIO (CFS)
If required fuel to EA is greater than required fuel to destination, ADDE fuel must be added preflight. Not required In-flight after PTO

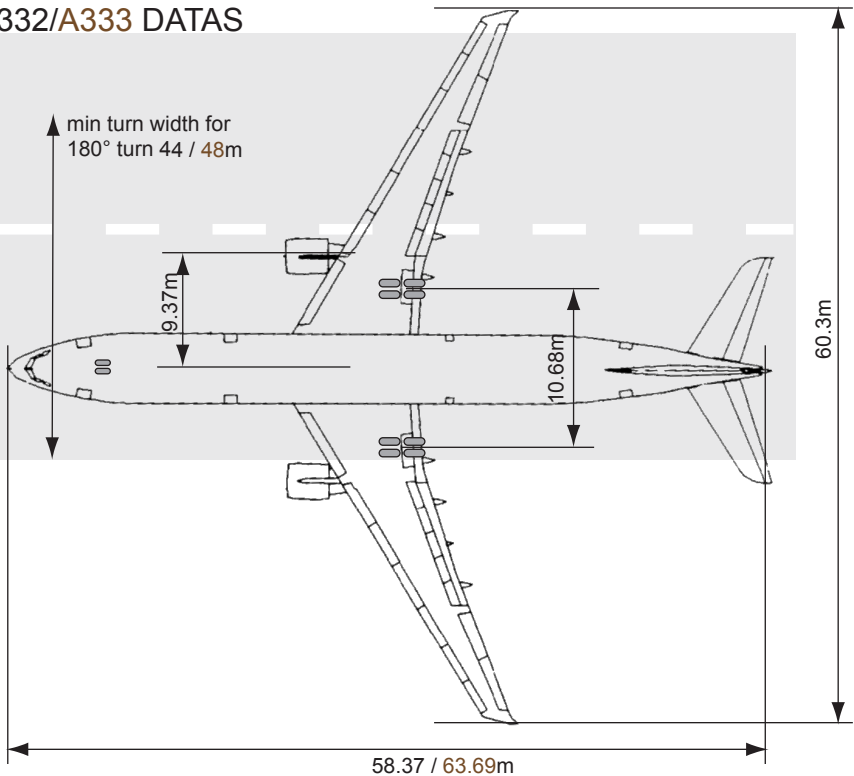


ADDE fuel must be on board if required at CFS



MEL
some MEL items may authorize ETOPS only after the first 60' of flight without problem on the system concerned. In this case, use normal ETOPS planning.

A332/A333 DATAS



WEIGHTS

MTW	230'900kg	233'900kg
MZFW	170'000kg	175'000kg
MTOW	230'000kg*	233'000kg
MLW	182'000kg	187'000kg

*220'000kg at HECA, FKKD, OMDB, OEJN, OPKC, FGSL OOMS, OERK, LLBG, FKYS, all EUR except ZRH & GVA

PAX

CONFIG	F	C	Y	TOT
332 03	12	42	142	196
332 04		48	182	230
332 S20		42	187	229
333 30	8	45	183	236

LMC

0FD, 2F, 4C, 6Y, 400kg dead load, 500kg fuel
1FD, 0F, 4C, 6Y, 400kg dead load, 500kg fuel
2FD, 0F, 1C, 5Y, 400kg dead load, 500kg fuel

PAX

norm	82 / 35 / 0 kg
charter	76 / 35 / 0 kg
japan	72 kg
crew	90 kg

26 / 32 LD-3 containers

